



# Golding Crescent

Earls Barton, Northamptonshire

oriordanbond  
SALES & LETTINGS



# Golding Crescent

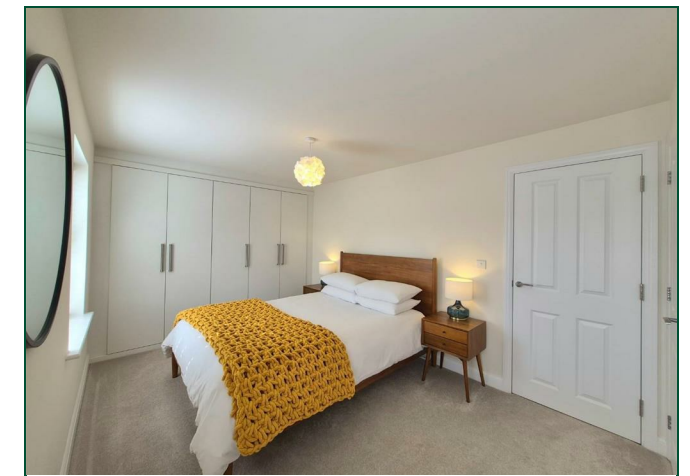
Earls Barton  
NN6 0FT

Price  
£445,000

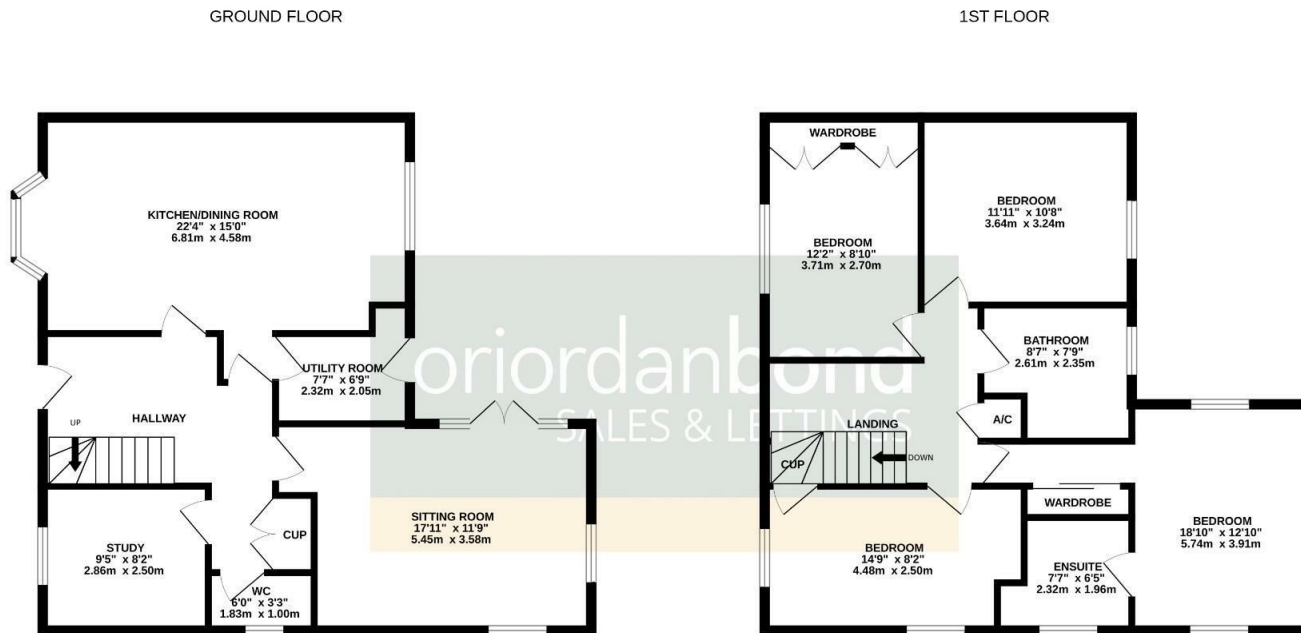
An immaculately presented four double bedroom detached family home, built by Messrs David Wilson Homes to their desirable 'Avondale' design, located on the sought after Wickets Development, with modern family living in mind including a high-spec open plan kitchen/dining room, landscaped gardens, garage and driveway for two cars.

Accommodation comprises spacious entrance hall, high-spec open plan kitchen/dining room with fitted appliances, large sitting room with French doors to the rear garden, study and cloakroom/WC, first floor landing, spacious master bedroom with dressing area and en-suite shower room, guest double bedroom with built-in wardrobes, two further double bedrooms and a four-piece family bathroom suite. Outside is lawn frontage with shrubs and planted borders and a large tarmac driveway to the side providing off road parking for two cars leading to a detached single garage with light and power. To the rear is an enclosed landscaped garden offering a great deal of privacy with two patio areas ideal for entertaining, lawn area and flower pots. Further benefits include uPVC double glazing, gas radiator heating, fitted air conditioning and remaining NHBC certificate. (A/1472/M)

- Immaculate four double bedroom detached home
- En-suite and dressing area to master bedroom
- Separate reception rooms
- Open plan high-spec kitchen/dining room
- Landscaped rear garden
- Driveway and garage







TOTAL FLOOR AREA : 1472 sq.ft. (136.8 sq.m.) approx.

Whilst every attempt has been made to ensure the accuracy of the floorplan contained here, measurements of doors, windows, rooms and any other items are approximate and no responsibility is taken for any error, omission or mis-statement. This plan is for illustrative purposes only and should be used as such by any prospective purchaser. The services, systems and appliances shown have not been tested and no guarantee as to their operability or efficiency can be given.

Made with Metropix ©2025



**Additional information**

- Council Tax Band: E
- Energy Efficiency Rating: B

**Viewing**

Viewing strictly by appointment – details below

**Disclaimer**

O’Riordan Bond Estate Agents Limited has not tested apparatus, equipment, fittings or services and so cannot verify they are in working order. The buyer is advised to obtain verification from their solicitor or surveyor.

**O’Riordan Bond Earls Barton Sales**  
 01604 810088

earlsbarton@oriordanbond.co.uk

